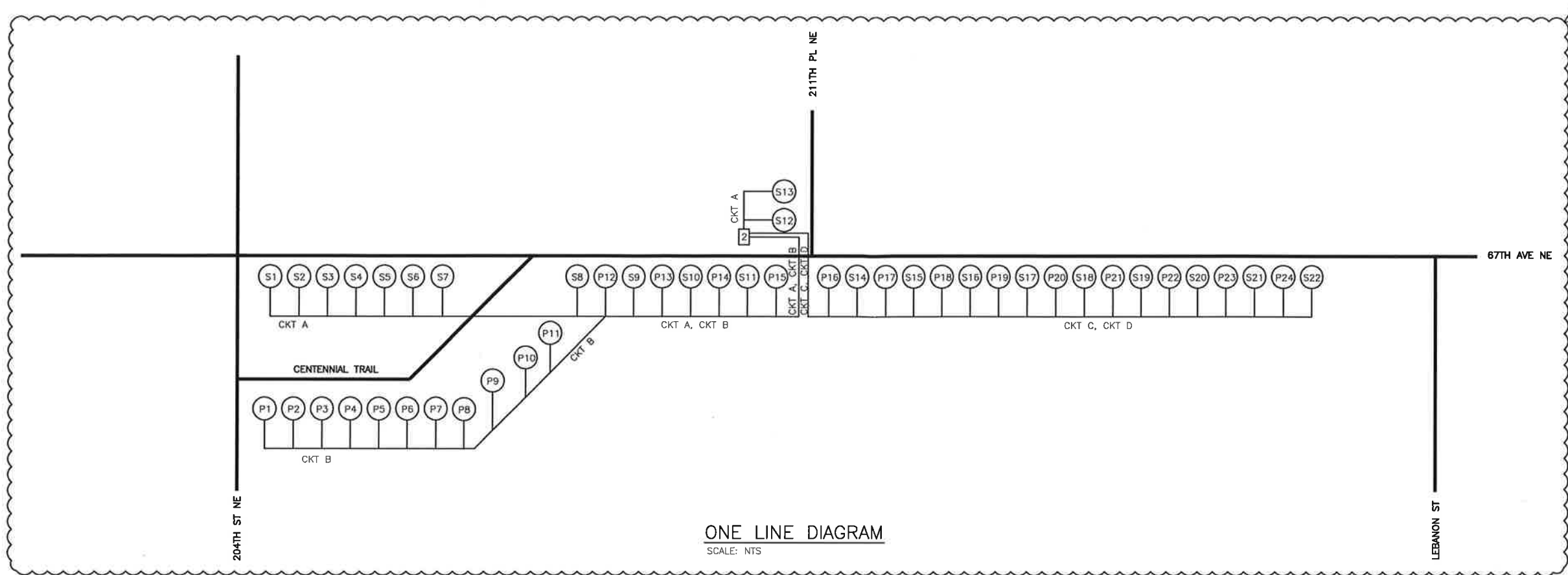


GENERAL NOTES:

1. SEE CHD1 FOR LUMINARE DETAILS.
2. SEE CHD2 FOR WIRING SCHEDULE.



ONE LINE DIAGRAM
SCALE: NTS

LEGEND:

- SERVICE CABINET
- LUMINAIRES

LUMINAIRE NUMBERING:

- S# DECORATIVE ROADWAY LIGHTING
- P# DECORATIVE PEDESTRIAN LIGHTING

CIRCUIT NUMBERING:

- CKT A FOR DECORATIVE ROADWAY LIGHTING AWG #2
- CKT B FOR DECORATIVE PEDESTRIAN LIGHTING AWG #6
- CKT C FOR DECORATIVE ROADWAY LIGHTING AWG #4
- CKT D FOR DECORATIVE PEDESTRIAN LIGHTING AWG #8

PANEL SCHEDULE

NO.	LOCATION: 211TH ST NE	VOLTS: 120/240	PHASE: 1		
2	SERVING: STREET LIGHTS, SIGNALS, ETC.	MAIN BREAKER: 150 AMPS WIRE: 3 + GRND.			
CKT NO.	LOAD DESCRIPTION	TRIP AMPS	TRIP AMPS	LOAD DESCRIPTION	CKT NO.
A	DECORATIVE ROADWAY LIGHTS	25	15	DECORATIVE PED. LIGHTS	C
B	DECORATIVE ROADWAY LIGHTS	15	15	DECORATIVE PED. LIGHTS	D
E	SPARE	15	6/50	TRAFFIC SIGNAL	F
H	SPARE	20	7		

REMARKS:
REQUIRED (1) 30 AMP LIGHTING CONTACTOR FOR EACH NEW LIGHTING CIRCUIT.

1/16/2014 3:54:35 PM, Tabloid, 1:2



ISSUE	DATE	DESCRIPTION	PROJECT NUMBER
1	01/16/2014	ROADWAY LIGHTING REVISION	0600000110731



CITY OF ARLINGTON
67th AVENUE PHASE III
RECONSTRUCTION PROJECT

**CHANNELIZATION, SIGNING,
& ILLUMINATION DETAILS**
CHD3
(3 OF 3)



FILENAME	CHD-00C-03.dwg
SCALE	N.T.S.

SHEET

113