

GENERAL NOTES

1. THE CONTRACTOR SHALL POTHOLE AND VERIFY LOCATIONS, ELEVATIONS, TYPES, AND SIZES OF ALL EXISTING UTILITIES PRIOR TO CONSTRUCTING NEW PIPING FAR ENOUGH IN ADVANCE TO ALLOW NECESSARY ADJUSTMENTS IN GRADE AND SHALL NOTIFY ENGINEER OF NEED TO ADJUST PIPING INSTALLATION ACCORDINGLY. POTHOLING SHALL SUFFICIENTLY PRECEDE LAYING OF PIPE TO ALLOW REQUIRED ELEVATION ADJUSTMENTS TO BE ACCOMPLISHED WITHOUT REWORK. ELEVATION ADJUSTMENTS SHALL BE EXPECTED AND ARE INCIDENTAL TO THE WORK.
2. SANITARY SEWER PIPE SHALL BE POLYVINYL CHLORIDE (PVC) SDR 35 AND CONFORM TO THE REQUIREMENTS OF ASTM D3034 WITH JOINTS AND RUBBER GASKETS CONFORMING TO ASTM D3212.
3. ALL SITE WORK CONCRETE SHALL BE A MINIMUM OF 3000 PSI STRENGTH UNLESS OTHERWISE NOTED.
4. LOCATIONS OF EXISTING UTILITIES ARE BASED ON INFORMATION SUPPLIED BY THE UTILITIES AND CONSIDERED APPROXIMATE ONLY. AS REQUIRED BY WASHINGTON STATE LAW, THE CONTRACTOR SHALL OBTAIN UTILITY LOCATES PRIOR TO COMMENCING CONSTRUCTION. CALL UNDERGROUND LOCATE AT 1-800-424-5555 A MINIMUM OF 48 HOURS (2 WORKING DAYS) PRIOR TO ANY EXCAVATION.
5. PRIOR TO COMPLETING ANY WORK ON THE BURLINGTON NORTHERN SANTA FE RAILROAD PROPERTY, THE CONTRACTOR SHALL COMPLETE THE RAILROAD'S SAFETY TRAINING PROGRAM AT WWW.CONTRACTORORIENTATION.COM. THIS TRAINING MUST BE COMPLETED NO MORE THAN ONE YEAR IN ADVANCE OF ENTRY ON THE PROPERTY.
6. THE BURLINGTON NORTHERN SANTA FE RAILROAD ROADMASTER MUST BE CONTACTED FIVE (5) DAYS PRIOR TO COMMENCING CONSTRUCTION ON THE RAILROAD PROPERTY.
7. BORE, RECEIVING AND PUSH PITS FOR CASINGS AND CARRIER PIPING SHALL BE SHORED AND BACKFILLED AS NECESSARY.
8. UNLESS NOTED ON THE DRAWINGS OR SPECIFIED OTHERWISE, ALL WORK IS TO BE CONSTRUCTED IN ACCORDANCE WITH THE MOST RECENT VERSION OF CITY OF ARLINGTON STANDARDS AND THE WSDOT/APWA STANDARD SPECIFICATIONS FOR ROAD, BRIDGE AND MUNICIPAL CONSTRUCTION.
9. ALL EXISTING FEATURES INCLUDING BUT NOT LIMITED TO ROADWAYS, STRUCTURES, LOTS, CURBS, SIDEWALKS, FENCES, WALLS, PLANTING, DITCHES, MAILBOXES, SIGNS, PIPING AND UTILITIES DISTURBED DURING CONSTRUCTION SHALL BE RESTORED TO AS GOOD OR BETTER THAN EXISTING CONDITION AS DETERMINED BY THE CITY OF ARLINGTON.
10. ALL PIPING SHALL HAVE A MINIMUM OF 3 FEET OF COVER FROM TOP OF PIPE BELL TO STREET GRADE OR OTHER FINISH GRADE, UNLESS OTHERWISE SHOWN OR APPROVED BY ENGINEER.
11. MANHOLES SHALL BE CONSTRUCTED IN ACCORDANCE WITH THE CITY OF ARLINGTON STANDARD PLANS AND SPECIFICATIONS.
12. MANHOLE COVERS SHALL BE FLUSH WITH FINISH GRADE.
13. DO NOT REMOVE TREES UNLESS THEY HAVE BEEN PREVIOUSLY IDENTIFIED IN THE FIELD FOR REMOVAL PER ENGINEER.
14. PROVIDE 'AS CONSTRUCTED' DRAWINGS INDICATING ALL CHANGES IN GRADE, ALIGNMENT, FITTINGS AND MATERIALS INSTALLED AND ANY OTHER UTILITIES OF OBSTACLES NOT SO INDICATED ON THESE PLANS.
15. AT THE END OF EACH WORK DAY ALL OPEN TRENCHES SHALL BE BACKFILLED AND ALL TRENCHES WITHIN STREETS SHALL BE TEMPORARILY PAVED OR COVERED TO THE SATISFACTION OF THE ENGINEER AND AS REQUIRED BY THE CONTRACTOR.
16. CONTRACTOR SHALL BE RESPONSIBLE FOR PROTECTING CONSTRUCTION SURVEYS AND COMPLETE CONSTRUCTION STAKING.
17. CONTRACTOR SHALL PROVIDE ENGINEER WITH MINIMUM TWO FULL WORKING DAYS NOTICE PRIOR TO ANY POTHOLING. ENGINEER WILL BE ON SITE DURING POTHOLING TO COORDINATE WITH CONTRACTOR TO REVIEW UTILITY INVESTIGATIONS AND ASSIST CONTRACTOR IN MAKING APPROPRIATE ADJUSTMENTS FOR ANY ALIGNMENT CONFLICTS WHERE CONNECTING TO EXISTING UTILITIES.
18. CONTRACTOR SHALL SUPPORT AND PROTECT AS NECESSARY ANY PIPE OR CONDUIT EXPOSED AS PART OF THE NEW PIPE TRENCH EXCAVATION. CONTRACTOR SHALL MAINTAIN ALL EXISTING UTILITIES IN SERVICE AT ALL TIMES AND SHALL COORDINATE WITH RESPECTIVE UTILITY COMPANIES TO MAINTAIN AND PROTECT SERVICES. SEE SECTION 1-07.17 OF THE SPECIAL PROVISIONS.
19. CONTRACTOR SHALL PROVIDE THE ENGINEER WITH A MINIMUM 48 HOURS NOTICE WHEN SAW CUTTING WILL BE PERFORMED. ENGINEER WILL ASSIST THE CONTRACTOR IN FIELD LOCATING DAMAGED PAVEMENT AREAS TO BE REMOVED AND REPLACED (DIGOUT REPAIRS) PRIOR TO SAW CUTTING.
20. THE CONTRACTOR SHALL DEVELOP AND SUBMIT A PROJECT TEMPORARY TRAFFIC CONTROL PLAN AND PEDESTRIAN SAFETY PLAN FOR CENTENNIAL TRAIL. REFER TO THE PROJECT SPECIFICATIONS FOR FURTHER DETAILS.
21. THE VERTICAL DATUM (NAVD 1988) WAS REFERENCED FROM SNOHOMISH COUNTY SURVEY CONTROL POINT #1294 3/2" UNITED STATES GEOLOGICAL SURVEY (U.S.G.S.) BRASS DISK. THE DISK WAS SET IN THE NORTHEAST CORNER OF THE CONCRETE BUILDING (CITY HALL). IT IS 4.3' ABOVE A CONCRETE SIDEWALK AT THE SOUTHWEST CORNER OF THE INTERSECTION OF NORTH OLYMPIC AVENUE AND EAST 3RD STREET IN THE CITY OF ARLINGTON.
22. THE BASIS OF THE SURVEY BEARING WAS REFERENCED FROM THE MONUMENT AT THE INTERSECTION OF EAST MAPLE STREET AND OLYMPIC AVENUE TO THE MONUMENT AT THE INTERSECTION OF EAST 1ST STREET AND OLYMPIC AVENUE.

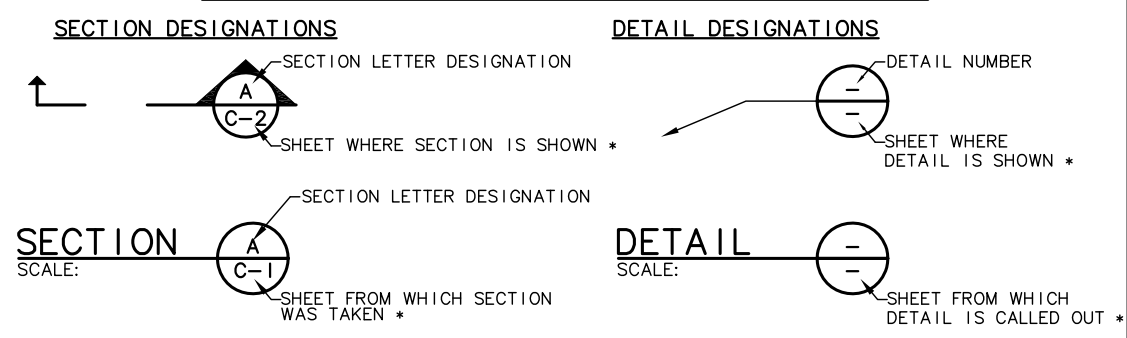
SYMBOLS AND LEGEND

	EXISTING	PROPOSED
WATERLINE	-----12"W-----	—————12"W—————
ELECTRICITY	-----E-----	—————E—————
GAS	-----G-----	—————G—————
TELEPHONE/TELEMETERY	-----T-----	—————T—————
OVERHEAD POWER	-----OHVD-----	—————OHVD—————
SANITARY SEWER LINE	-----8"SS-----	—————8"SS—————
STORM DRAIN	-----8"SD-----	—————8"SD—————
CULVERT	>-----18"D-----<	>—————18"D—————<
ABANDON PIPE		+++++////////+
DRAINAGE DITCH	-----	-----
BARBED-WIRE FENCE	-x-x-x-	-x-x-x-
CHAIN LINK FENCE	-----	-----
WOODEN FENCE	-□-□-□-□-	-□-□-□-□-
GUARDRAIL	-----	-----
TREE/BUSH LINE	-----	-----
CENTERLINE	-----	-----
EASEMENT/PROPERTY LINE	-----	-----
EDGE OF PAVEMENT/AC	-----	-----
EDGE OF GRAVEL	-----	-----
CURB	=====	=====
SIDEWALK	-----S/W-----	-----S/W-----
STRUCTURE OR FACILITY	-----	-----
CONTOUR MINOR	-----	-----
CONTOUR MAJOR	-----120-----	-----120-----
MANHOLE	○	●
CLEAN-OUT	○	○
CATCH BASIN/FIELD INLET	□	■
THRUST BLOCK	△	▲
VALVE	⊗	⊙
AIR INJECTION ASSEMBLY	┌-□	┌-□
BLOW-OFF ASSEMBLY	○-○	○-○
AIR RELEASE ASSEMBLY	┌-○	┌-○
FIRE HYDRANT ASSEMBLY	○	●
WATER METER	⊕	⊕
PULL BOX/JUNCTION BOX	┌-□	┌-□
UTILITY POLE	○	○
GUY WIRE	→	→
VAULT	⊗	⊗
MAIL BOX	┌-□	┌-□
SIGN	┌-┘	┌-┘
BENCH MARK	⊕	⊕
TREE DECIDUOUS	☼	☼
TREE CONIFEROUS	☼	☼
GROUND WATER WELL	⊗	⊗
SURFACE ELEVATION	+ 176.63	+ 176.63
IRON ROD, REBAR	○	○
SURVEY CONTROL, MONUMENT	△	△

ABBREVIATIONS

@	AT	PROP	PROPERTY
ABAN(D)	ABANDON(ED)	PVC	POLYVINYL CHLORIDE
AC	ASPHALTIC CONCRETE	ROW	RIGHT-OF-WAY
APPROX	APPROXIMATE	RR	RAILROAD
APPVD	APPROVED	(S)	SOUTH
ARV	AIR RELEASE VALVE	SCHED	SCHEDULE
ASSY	ASSEMBLY	SD	STORM DRAIN
AVE	AVENUE	SDMH	STORM DRAIN MANHOLE
BNSF	BURLINGTON NORTHERN SANTA FE	SHT	SHEET
CB	CATCH BASIN	SLP or S	SLOPE
CCP	CONCRETE CYLINDER PIPE	SS	SANITARY SEWER
C/L or ☉	CENTER LINE	SSCO	SANITARY SEWER CLEAN OUT
CO	CLEANOUT	SSMH	SANITARY SEWER MANHOLE
COA	CITY OF ARLINGTON	ST	STREET
CONC	CONCRETE	STA	STATION
CPLG	COUPLING	STD	STANDARD
CPP	CORRUGATED PLASTIC PIPE	STL	STEEL
DET	DETAIL	S/W	SIDEWALK
DIA	DIAMETER	TEMP	TEMPORARY
DN	DOWN	TESC	TEMPORARY EROSION & SEDIMENTATION CONTROL
DWG	DRAWING	TYP	TYPICAL
DWY	DRIVEWAY	TV	TELEVISION
(E)	EAST	VERT	VERTICAL
E	ELECTRIC	(W)	WEST
EL	EASEMENT LINE, ELEVATION	W	WATER
EQ	EQUAL	WSDOT	WASHINGTON DEPARTMENT OF TRANSPORTATION
EXIST	EXISTING	W/	WITH
FLG	FLANGE		
G	GAS		
GR	GRADE		
HORIZ	HORIZONTAL		
IE	INVERT ELEVATION		
LAT	LATERAL		
MH	MANHOLE		
MIN	MINIMUM		
(N)	NORTH		
OT	OVERHEAD TELEPHONE		
OVHD	OVERHEAD		
O/W	OIL WATER SEPARATOR		

SECTION AND DETAIL DESIGNATIONS



* NOTE: IF PLAN AND SECTION FOR DETAIL CALL-OUT AND DETAIL ARE SHOWN ON THE SAME DRAWING, DRAWING NUMBER IS REPLACED WITH A DASH.

G:\08\0934\204\CAD\08-0934-204-WA-G2.dwg G-2 7/18/2008 10:44 AM DAK 17.05 (LMS Tech)

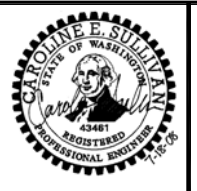
NO.	DATE	BY	REVISION

NOTICE

0 1/2 1

IF THIS BAR DOES NOT MEASURE 1" THEN DRAWING IS NOT TO SCALE

DESIGNED	CES
DRAWN	DAK
CHECKED	TJP



MSA

Murray Smith & Associates, Inc.
Engineers/Planners

2707 Colby Avenue, Suite 1110 PHONE 425.252.9003
Everett, Washington 98201-3566 FAX 425.252.8853

**EAST 1st STREET
SEWER EXTENSION**

GENERAL NOTES,
SYMBOLS AND LEGEND,
AND ABBREVIATIONS

PROJECT NO.: 08-0934.204 SCALE: NONE DATE: JULY 2008

SHEET

G-2

2 of 7