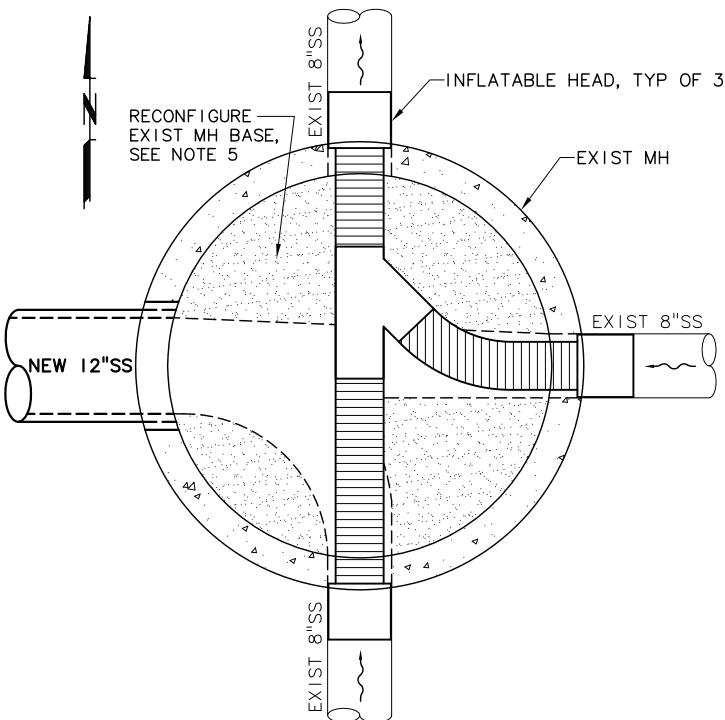


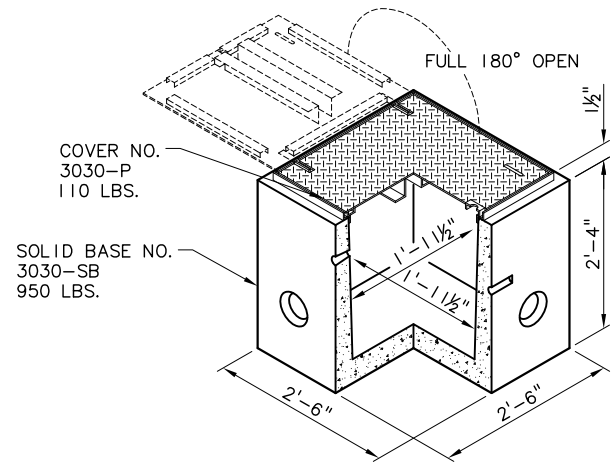
**EMERGENCY BYPASS/OVERFLOW CONNECTION**  
SCALE: NTS



**TEMPORARY INFLATABLE WYE BY-PASS**  
SCALE: NTS

**NOTES:**

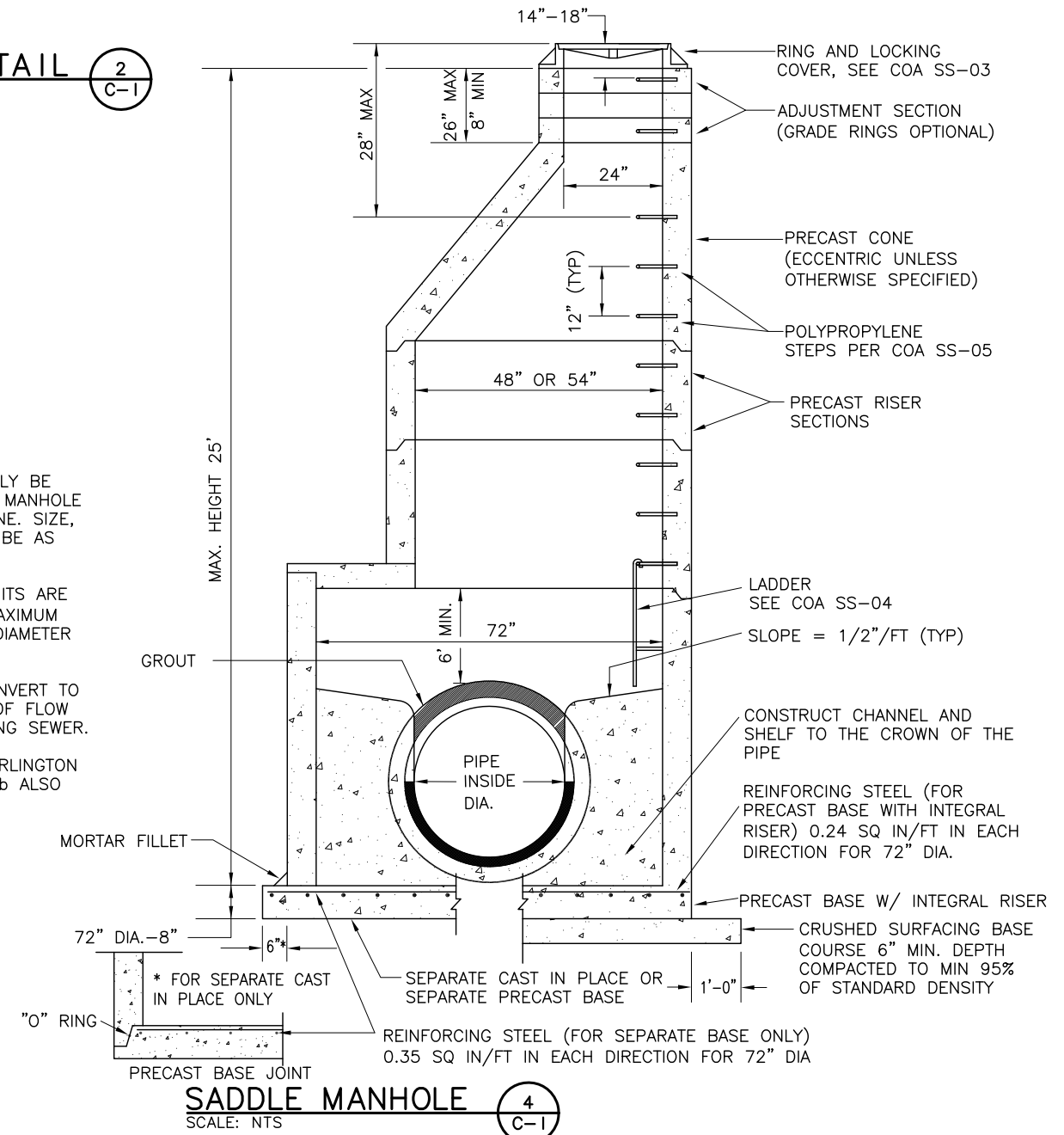
1. INFLATABLE WYE SHALL BE A STEMAR'S WASTEWATER BYPASS/FULL FLOW-THRU SEWER PLUG (STEMAR EQUIPMENT & SUPPLY CO., PH: 213-625-0185) OR APPROVED EQUAL. REFER TO THE SPECIFICATIONS.
2. COORDINATE THE INSTALLATION OF THE TEMPORARY BYPASS WYE WITH THE CITY OF ARLINGTON.
3. THE CONTRACTOR SHALL PROVIDE THE TEMPORARY BYPASS WYE AND ALL APPURTENANT ITEMS REQUIRED TO PROPERLY UTILIZE THE EQUIPMENT.
4. CONTRACTOR SHALL CORE DRILL EXISTING MANHOLE IN A MANNER THAT ENSURES THE STRUCTURAL INTEGRITY OF THE EXISTING CONCRETE STAYS INTACT. UTILIZE NON-SHRINK GROUT FOR ANNULAR SPACE.
5. CHIP AND REMOVE EXISTING CONCRETE CHANNEL. FORM AND CHANNEL THE MANHOLE BOTTOM TO PROMOTE FLOW FROM THE EXISTING SERVICE MAINS TO THE NEW SANITARY SEWER PIPE.



**PULL BOX DETAIL**  
SCALE: NTS

**NOTES:**

1. SADDLE MANHOLE MAY ONLY BE USED WHEN PLACING A NEW MANHOLE OVER AN EXISTING SEWER LINE. SIZE, LOCATION, AND ANGLE MUST BE AS REQUIRED BY PLANS.
2. OPENINGS IN PRECAST UNITS ARE TO BE 4" MINIMUM TO 8" MAXIMUM LARGER THAN THE OUTSIDE DIAMETER OF THE PROPOSED PIPE.
3. CONSTRUCT BENCH AND INVERT TO ALLOW SMOOTH TRANSITION OF FLOW FROM NEW SEWER TO EXISTING SEWER.
4. ALL NOTES ON CITY OF ARLINGTON DETAILS SS-01a AND SS-01b ALSO APPLY TO THIS DETAIL.



**SADDLE MANHOLE**  
SCALE: NTS

G:\08\0934\204\CAD\08-0934-204-WA-DET.dwg C-4 7/17/2008 5:01 PM DAK 17.0s (LMS Tech)

| NO. | DATE | BY | REVISION |
|-----|------|----|----------|
|     |      |    |          |
|     |      |    |          |
|     |      |    |          |

**NOTICE**

IF THIS BAR DOES NOT MEASURE 1" THEN DRAWING IS NOT TO SCALE

BTS DESIGNED  
DAK DRAWN  
CES CHECKED



**MSA** Murray Smith & Associates, Inc.  
Engineers/Planners  
2707 Colby Avenue, Suite 1110 PHONE 425.252.9003  
Everett, Washington 98201-3566 FAX 425.252.8853



**EAST 1st STREET  
SEWER EXTENSION**

**GENERAL CIVIL DETAILS**

PROJECT NO.: 08-0934.204 SCALE: AS SHOWN DATE: JULY 2008