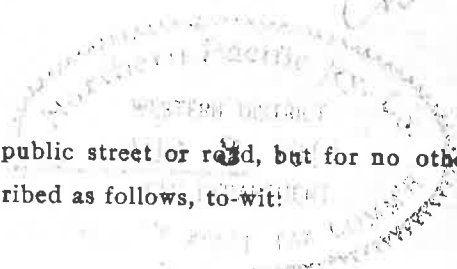


THE NORTHERN PACIFIC RAILWAY COMPANY, a corporation under the laws of Wisconsin, in consideration of one dollar and the agreements herein contained grants unto

City of Arlington,

of the State of **Washington,** the right to use for the purpose of a public street or road, but for no other purposes whatsoever, portions of the right of way of the Railway Company described as follows, to-wit:



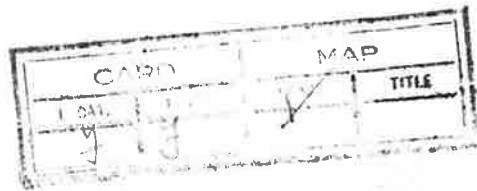
That portion of the Railway Company's right of way in the SE $\frac{1}{4}$ NW $\frac{1}{4}$ Sec. 11, Twp. 31 North, Range 5 East, W.M., lying between two lines drawn parallel with and distant respectively 35 feet and 50 feet northwestwardly from the center line of the main track, and extending from the south line of said subdivision northwardly a distance of 700 feet; also crossing said right of way in the NW $\frac{1}{4}$ SW $\frac{1}{4}$ of said Sec. 11, along a line parallel with and distant 60 feet northwardly from the south line of said NW $\frac{1}{4}$ SW $\frac{1}{4}$ Sec. 11.

The privilege hereby granted is effective from the **1st** day of **June,** 191 **4** , until terminated as provided in this agreement or otherwise.

This grant is made upon the following terms:

1. The street or road shall be constructed and maintained in a good and workmanlike manner and made and kept as safe for public travel as possible. The expense of construction and maintenance thereof shall be borne by the grantee; and the Railway Company shall not be liable for or assessed for any of the expense of construction or maintenance.
2. Should the right of way, the right to use which is hereby granted, or any portion thereof, be required for the construction of tracks, buildings, including public and private warehouses, or for other railroad purposes, the grantee shall change the location of said street or road and vacate the said right of way, or such portion thereof as the Railway Company shall request; and the entire expense of such change shall be borne by the grantee.
3. The Railway Company may upon **ninety** days' notice in writing revoke this permit, and the grantee hereby agrees in that event to peacefully and promptly surrender possession of the premises unto the Railway Company.

*OK Council
files*



IN WITNESS WHEREOF, the parties hereto have executed these presents in duplicate originals this **25th** day of **May,** 191 **4** .

NORTHERN PACIFIC RAILWAY COMPANY,

By J. L. WATSON.
Principal Right-of-Way Agent.

ATTEST:

Clerk.

CITY OF ARLINGTON,

By L. N. Jones

Lawyer

March 7, 1968

Northern Pacific Railway Company
Properties & Industrial Development Department
919 Smith Tower
Seattle 4, Washington

Re: Easement
May 25

Gentlemen:

I have in my files a "Supplement" dated _____ to above easement but cannot find the exact location. It may be too much trouble for you to furnish a copy of the above easement? Also, if you or someone else can draw a sketch as to what area the easement covers, I would appreciate it. I do not understand estate descriptions very well but it looks like this is a 15 foot wide easement from the intersection of Lebanon and West streets and going South parallel to the railroad tracks.

My interest at this time in this easement is that we have had complaints about advertising signs on the entrance to town and I feel I must know where we stand in order to answer the complaints.

Thank you in advance for your attention :

Yours very

Helen Berg
City Clerk

NORTHERN PACIFIC RAILWAY COMPANY

INDUSTRIAL DEVELOPMENT DEPARTMENT

J. H. POORE, INDUSTRIAL COMMISSIONER
ST. PAUL, MINN.

V. E. WILLIAMS,
INDUSTRIAL AGENT
SEATTLE 4, WASH.

SEATTLE 4,

June 9,

City of Arlington
Arlington
Washington

Attention: W. H. Fowl
Town Clerk

Dear Sir:

Referring to easement No. 27691 in favor of Arlington, covering a longitudinal encroachment of its highway on our right of way at Arlington crossing.

There is returned to you herewith for the City, duplicate original of supplement to its amending the description therein so as to eliminate crossing. This easement now covers only the 1 encroachment of your paved highway on our right

You will note that this has now been completed of the Railway Company.

Very truly
Y. E. Williams

Industrial

Enc.
dn

SUPPLEMENT TO HIGHWAY EASEMENT No. 27691

BY MUTUAL AGREEMENT, the description in that certain easement numbered 27691, dated May 25, 1914, issued to CITY OF ARLINGTON, by the NORTHERN PACIFIC RAILWAY COMPANY, authorizing the construction and maintenance of a public street or road on and across the Railway Company's right of way for its Sumas Branch at ARLINGTON station, Washington, is hereby modified to read as follows:

That portion of the Railway Company's right of way for its Sumas Branch in the southeast quarter of the northwest quarter of section 11 in township 31 north of range 5 east of the Willamette Meridian in Snohomish County, Washington, at ARLINGTON station, lying between two lines parallel with and distant respectively 35 feet and 50 feet northwesterly, measured at right angles, from the center line of the main track as now constructed and extending from the south line of said subdivision to a line parallel therewith and distant 700 feet northerly therefrom, said distance being measured along said center line.

All other terms and conditions of said easement shall remain in full force and effect.

IN WITNESS WHEREOF, the parties have executed these presents this 5 day of June, 1945.

NORTHERN PACIFIC RAILWAY COMPANY

By

F. Williams

Industrial Agent

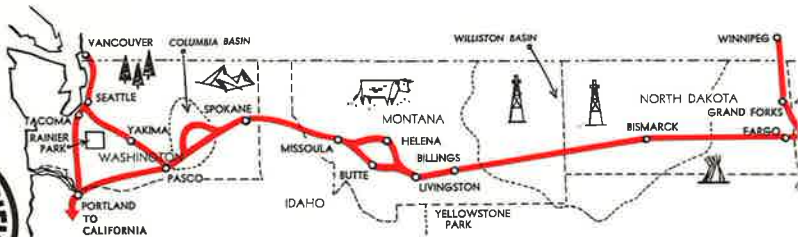
CITY OF ARLINGTON

Attest:

W. H. Toulson
Town Clerk

By

Ernest R. Meier
Mayor



NORTHERN PACIFIC RAILWAY COMPANY

PROPERTIES AND INDUSTRIAL DEVELOPMENT DEPARTMENT

820 CENTRAL BUILDING

SEATTLE, WASH. 98104

RICHARD D. LARSON,
Western Manager,
Industrial Development

March 18, 1968

City of Arlington
Arlington, Washington

Attention: Helen Bergan, City Clerk

Gentlemen:

In accordance with your letter of March 7, herewith copy of Easement No. 27691 covering the use of our property at Arlington. Also attached is a print covered by this easement outlined in red.

If we can be of any further assistance, please state to let us know.

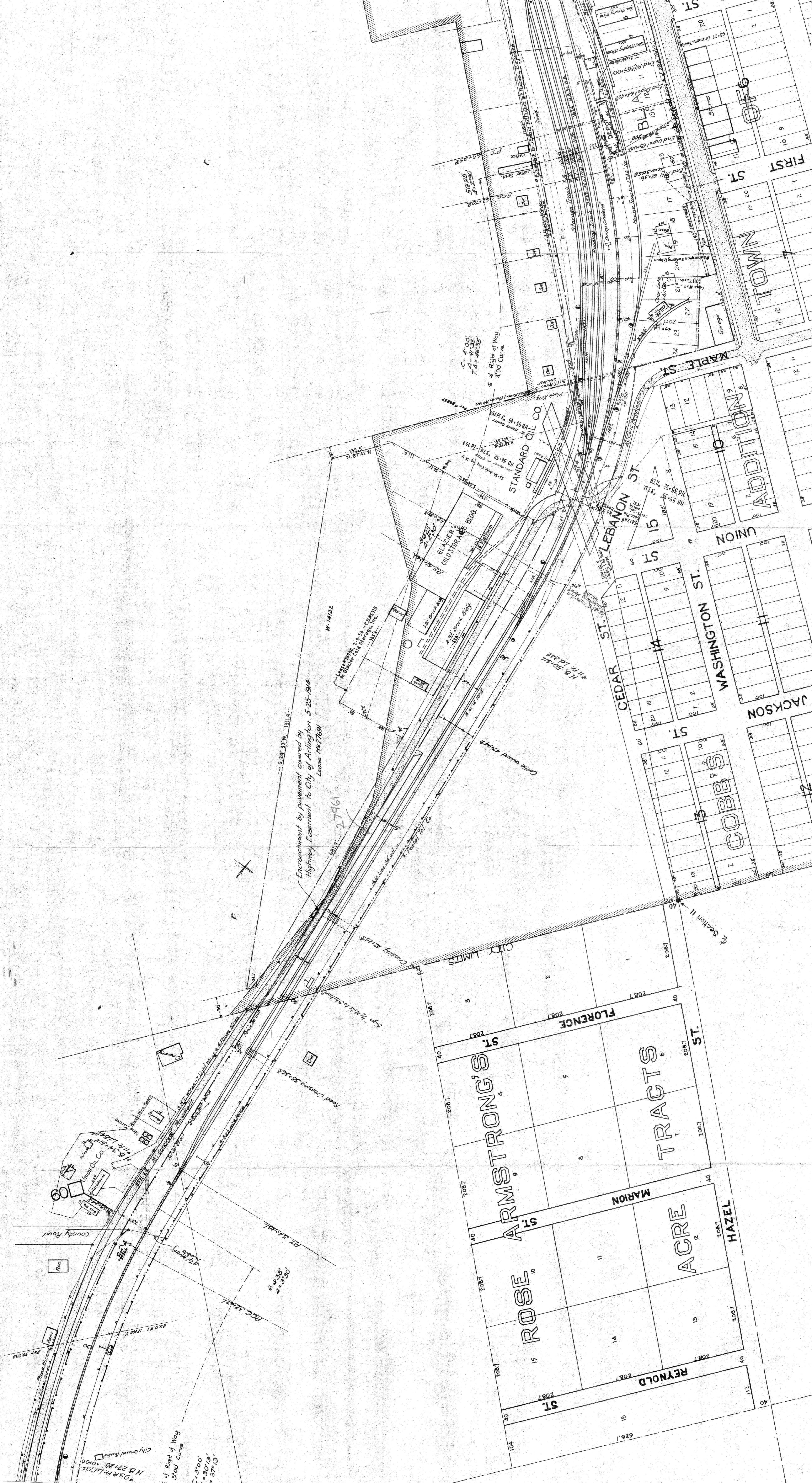
Yours very truly

RICHARD D. LARSON
Western Manager
Industrial Development

Katherine

By: Katherine
Lease Clerk

KG/mnt



Encroachment by pavement covered by
Highway Easement to City of Arlington 5-25-1914
Lease No. 27681

CITY LIMITS

ARMSTRONG'S ST

ROSE ST

MARION ST

ACRE ST

HAZEL ST

REYNOLD ST

CEDAR ST

LEBANON ST

WASHINGTON ST

UNION ST

COBBS ST

JACKSON ST

ADDITION TOWN

MAPLE ST

FIRST ST

95 R. R. 1478
H. B. 27.20
City Gravel Bank

City of Right of Way
300 Curve
E/L 1/2 = 100
E/L 1/4 = 50
E/L 3/4 = 150

FLORENCE ST

ARMSTRONG'S ST

ROSE ST

MARION ST

ACRE ST

HAZEL ST

REYNOLD ST

CEDAR ST

LEBANON ST

WASHINGTON ST

UNION ST

COBBS ST

JACKSON ST

ADDITION TOWN

MAPLE ST

FIRST ST

58° 17' 27.961

59° 17' 27.961

58° 17' 27.961

59° 17' 27.961

58° 17' 27.961

59° 17' 27.961

58° 17' 27.961

59° 17' 27.961

58° 17' 27.961

59° 17' 27.961

58° 17' 27.961

59° 17' 27.961

58° 17' 27.961

59° 17' 27.961

58° 17' 27.961

59° 17' 27.961

58° 17' 27.961

59° 17' 27.961

58° 17' 27.961

59° 17' 27.961

58° 17' 27.961

59° 17' 27.961

58° 17' 27.961

59° 17' 27.961

58° 17' 27.961

59° 17' 27.961

58° 17' 27.961

59° 17' 27.961

58° 17' 27.961

59° 17' 27.961

58° 17' 27.961

59° 17' 27.961

58° 17' 27.961

59° 17' 27.961

58° 17' 27.961

59° 17' 27.961

58° 17' 27.961

59° 17' 27.961

58° 17' 27.961

59° 17' 27.961

58° 17' 27.961

59° 17' 27.961

58° 17' 27.961

59° 17' 27.961

58° 17' 27.961

59° 17' 27.961

58° 17' 27.961

59° 17' 27.961

58° 17' 27.961

59° 17' 27.961

58° 17' 27.961

59° 17' 27.961

58° 17' 27.961

59° 17' 27.961

58° 17' 27.961

59° 17' 27.961

58° 17' 27.961

59° 17' 27.961

58° 17' 27.961

59° 17' 27.961

58° 17' 27.961

59° 17' 27.961

58° 17' 27.961

59° 17' 27.961

58° 17' 27.961

59° 17' 27.961

58° 17' 27.961

59° 17' 27.961

58° 17' 27.961

59° 17' 27.961

58° 17' 27.961

59° 17' 27.961

58° 17' 27.961

59° 17' 27.961

58° 17' 27.961

59° 17' 27.961

58° 17' 27.961

59° 17' 27.961

58° 17' 27.961

59° 17' 27.961

58° 17' 27.961

59° 17' 27.961

58° 17' 27.961

59° 17' 27.961

58° 17' 27.961

59° 17' 27.961

58° 17' 27.961

59° 17' 27.961

58° 17' 27.961

59° 17' 27.961

58° 17' 27.961

59° 17' 27.961

58° 17' 27.961

59° 17' 27.961

58° 17' 27.961

59° 17' 27.961