

EVERGREEN MEADOWS

IN THE NW 1/4 OF THE SE 1/4, SECTION 16, TOWNSHIP 31 NORTH, RANGE 5 EAST, W.M., COUNTY OF SNOHOMISH, STATE OF WASHINGTON, PFN 99-110457 SD

Table with columns: NUMBER, DELTA, R, L. Contains survey data points for various bearings and distances.

Table with columns: C#, DELTA, R, L. Contains survey data points for various bearings and distances.

Table with columns: NUMBER, DIRECTION, DISTANCE. Contains survey data points for various bearings and distances.

Table with columns: NUMBER, DIRECTION, DISTANCE. Contains survey data points for various bearings and distances.

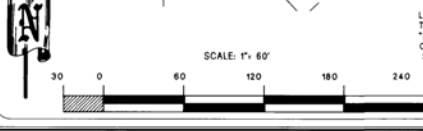
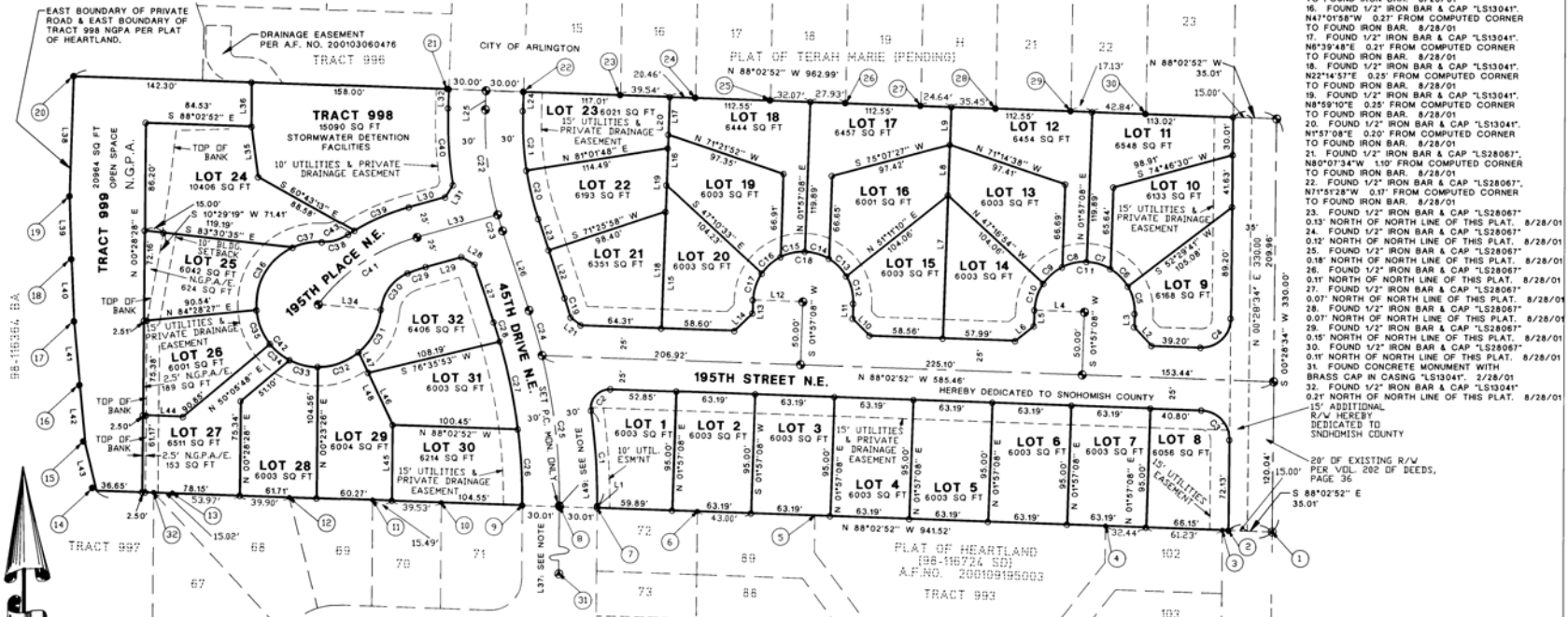
TABLE OF FOUND SURVEY MARKERS

- List of 32 survey markers with descriptions of their locations and types, such as 'FOUND CONCRETE MONUMENT WITH BRASS CAP'.

Legend

- Legend symbols and descriptions: circle for 1/2" x 24" long iron bar, triangle for survey monument, cross for G.L.O. monument.

METHOD OF SURVEY: CONVENTIONAL RANDOM TRAVERSE USING GEODEMETER 3" ROBOTIC TOTAL STATION INSTRUMENT.



L 37, L 49 NOTE: THESE TANGENTS RUN TO THE P.I. MONUMENT AT CL & PLAT LINE, ITEM 'B' WHICH IS NOW OBLITERATED. THE POINT OF CURVATURE MONUMENT SET DURING THIS SURVEY IS ALL THAT REMAINS.

SHEET INDEX

Table with columns: SHEET NO., CONTENTS. Lists sheet numbers and their corresponding content descriptions.



AUDITOR'S FILE NO. 200112055010
SUBDIVISION NO: PFN 99-110457 SD
Date: AUGUST 31, 2001
Sheet: 3 of 3 sheets.
Job Number: 1208

Huey Surveying & Land Consulting, Inc.
23407 135th Avenue Northeast
Arlington, Washington 98223
Telephone: (360) 435-4566; Fax: (360) 435-5599