

EXHIBIT "A"

AGREEMENT NO. UC 3491
 SR 9 MP 26.96 CS 3134
 SHEET 1 OF 2

All Plans are public documents.
 Further reading prohibited without permission.

~~SECONDARY STATE HIGHWAY NO.~~
 LAKE STEVENS TO ARLINGTO
 SNOHOMISH COUNTY



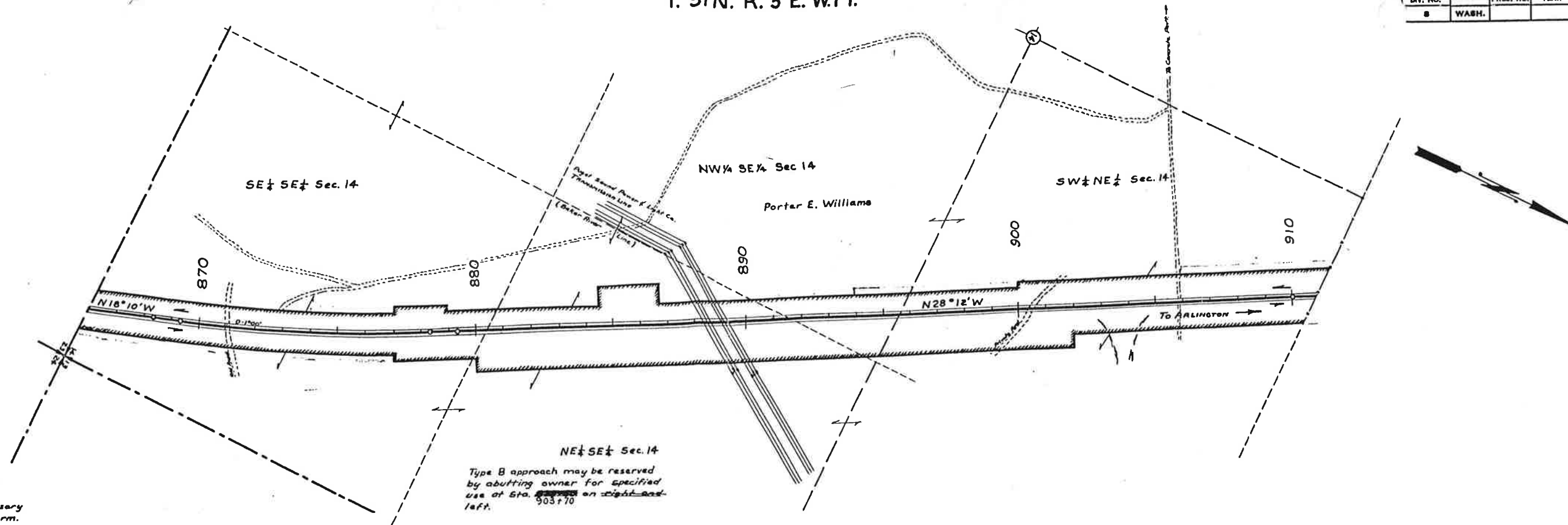
WASHINGTON STATE HIGHWAY COMMISSION
 DEPARTMENT OF HIGHWAYS
 OLYMPIA, WASHINGTON
 E. C. Huxley, Chairman
 R. E. Howell, Member
 C. E. Brown, Member
 W. E. Mosman, Member

SCALE HORIZ. 1 INCH = 100 FEET
 SCALE VERT. 1 INCH = 10 FEET
 APPROVED: July 12, 1995

FOR R. OF W. SHEET 1 OF 21 SHEETS

Letter	Date	Description	By
Letter 10-21-98	12-23-98	Revised L/A on Rt. Sta. 857+51.99 to 858+81.99; Added Grade Intersection RI, and N.E. 106TH ST.	HED
Letter 3-19-96	3-29-96	Revised L/A on LI Sta. 857+51.99 to 858+81.99; Added Grade Intersection LI, and E Line Sta. 858+16.99	HED
3 Authority	Date	Subsequent Approval	By

CONTRACT NO.



NOTE:
Type B approach is an off and on approach in a legal manner, not to exceed 20' in width, for use necessary to the normal operation of a farm.

Access to be prohibited shown thus

TYPE C APPROACH IS AN OFF AND ON APPROACH IN LEGAL MANNER, FOR SPECIAL PURPOSE AND WIDTH TO BE AGREED UPON. IT MAY BE SPECIFIED AT A POINT SATISFACTORY TO THE STATE AT OR BETWEEN DESIGNATED HIGHWAY STATIONS.

* EMERGENCY ACCESS ONLY
THIS APPROACH, NOT TO EXCEED 20 FEET IN WIDTH, WILL BE CLOSED ONCE AN ALTERNATIVE SECONDARY ACCESS IS PROVIDED TO THIS PROPERTY

NO. 9 THIS APPROACH SHALL BE GATED AND LOCKED WHEN NOT IN USE

NE 1/4 SE 1/4 Sec. 14
Type B approach may be reserved by abutting owner for specified use at Sta. 903+70 on right and left.

ACCESS APPROACH SCHEDULE		
USER	STATION ON ROADWAY	TYPE
WNER	903+70 RT.	C-9-*

EXHIBIT "A"

AGREEMENT NO. UC 3491
SR 9 MP 26.96 CS 3134
SHEET 2 OF 2

SR-9
~~SECONDARY STATE HIGHWAY NO. 1A~~
LAKE STEVENS TO ARLINGTON
PLAN SHOWING ACCESS
SNOHOMISH COUNTY



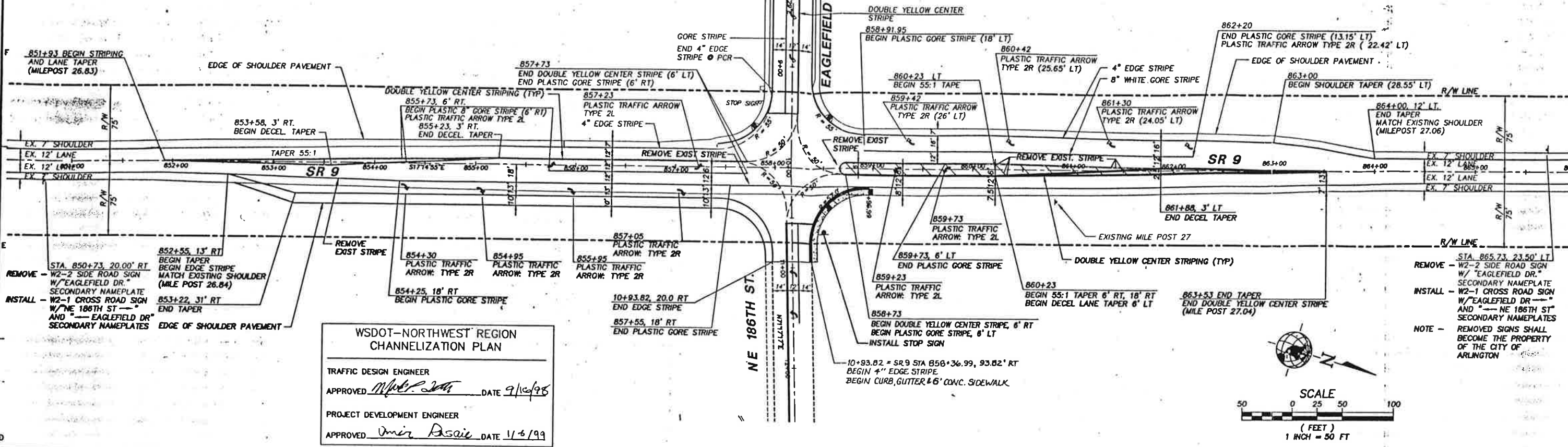
WASHINGTON STATE HIGHWAY COMMISSION
DEPARTMENT OF HIGHWAYS
OLYMPIA, WASHINGTON
R. A. Momic, Chairman
E. C. HUNTLEY, Member
H. E. MORGAN, Member
R. E. HENKEL, Member
DORIS E. STONE, Member

SCALE: 1 INCH = 200 FEET
APPROVED: May 31, 1955

W. A. Beebe
DIRECTOR OF HIGHWAYS

SHEET 6 OF 6 SHEETS
Established by Commission Resolution No. 255 June 22, 1951

Letter 11-25-98	12-23-98	Deleted TYPE B Approach Sta. 903+40 RI; Added TYPE C-9-a Approach Sta. 903+70 RI.	W.A.B.
Res. No. 428	12-21-54	Type B Approach Sta. 875+50 revised to Sta. 903+70 Right & Left.	E.W.T.
AUTHORITY	DATE	SUBSEQUENT APPROVAL	BY



WSDOT-NORTHWEST REGION
CHANNELIZATION PLAN

TRAFFIC DESIGN ENGINEER
APPROVED *M. P. [Signature]* DATE 9/16/95

PROJECT DEVELOPMENT ENGINEER
APPROVED *Umar Asaie* DATE 11/6/99

NOTE - REMOVED SIGNS SHALL BECOME THE PROPERTY OF THE CITY OF ARLINGTON

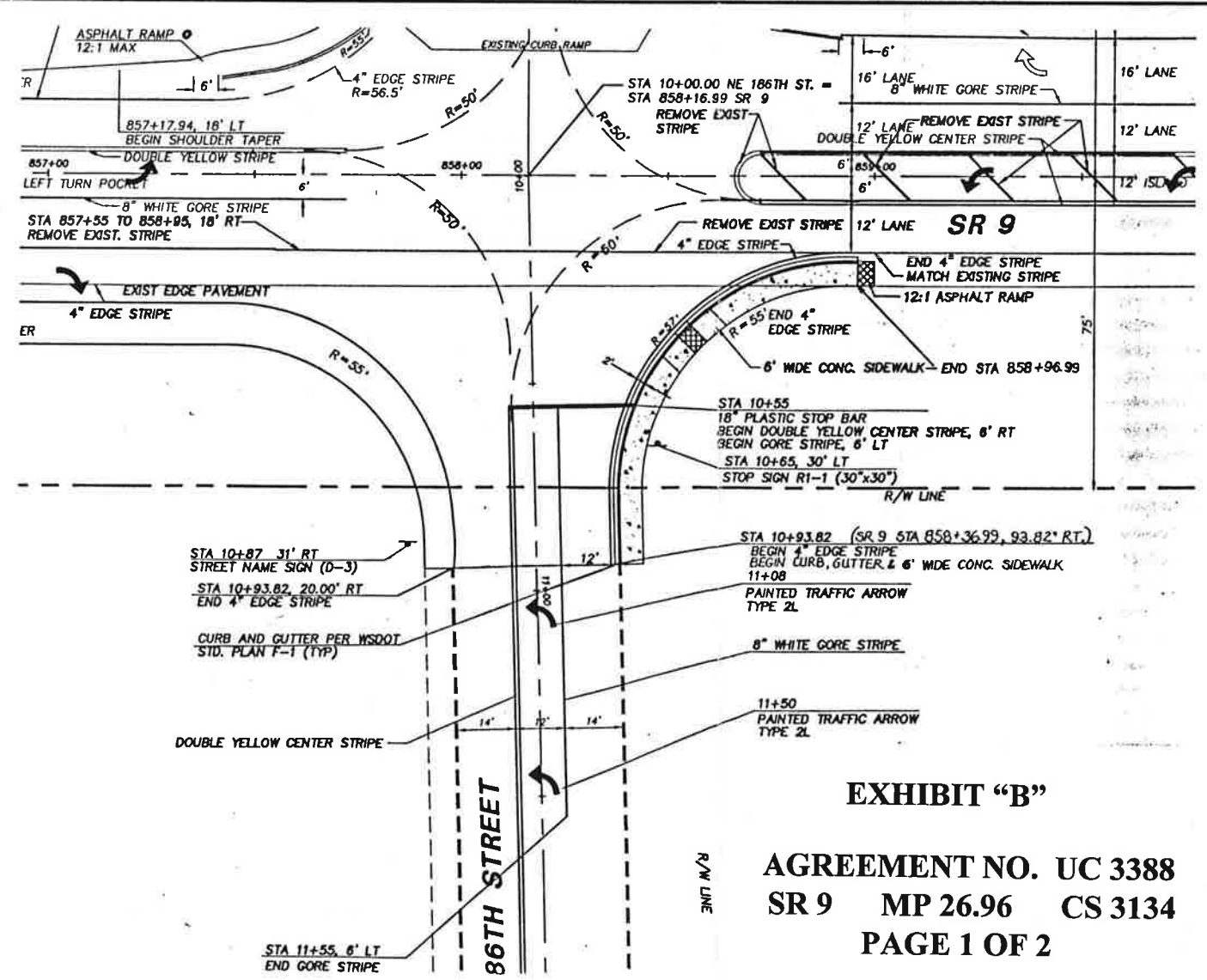
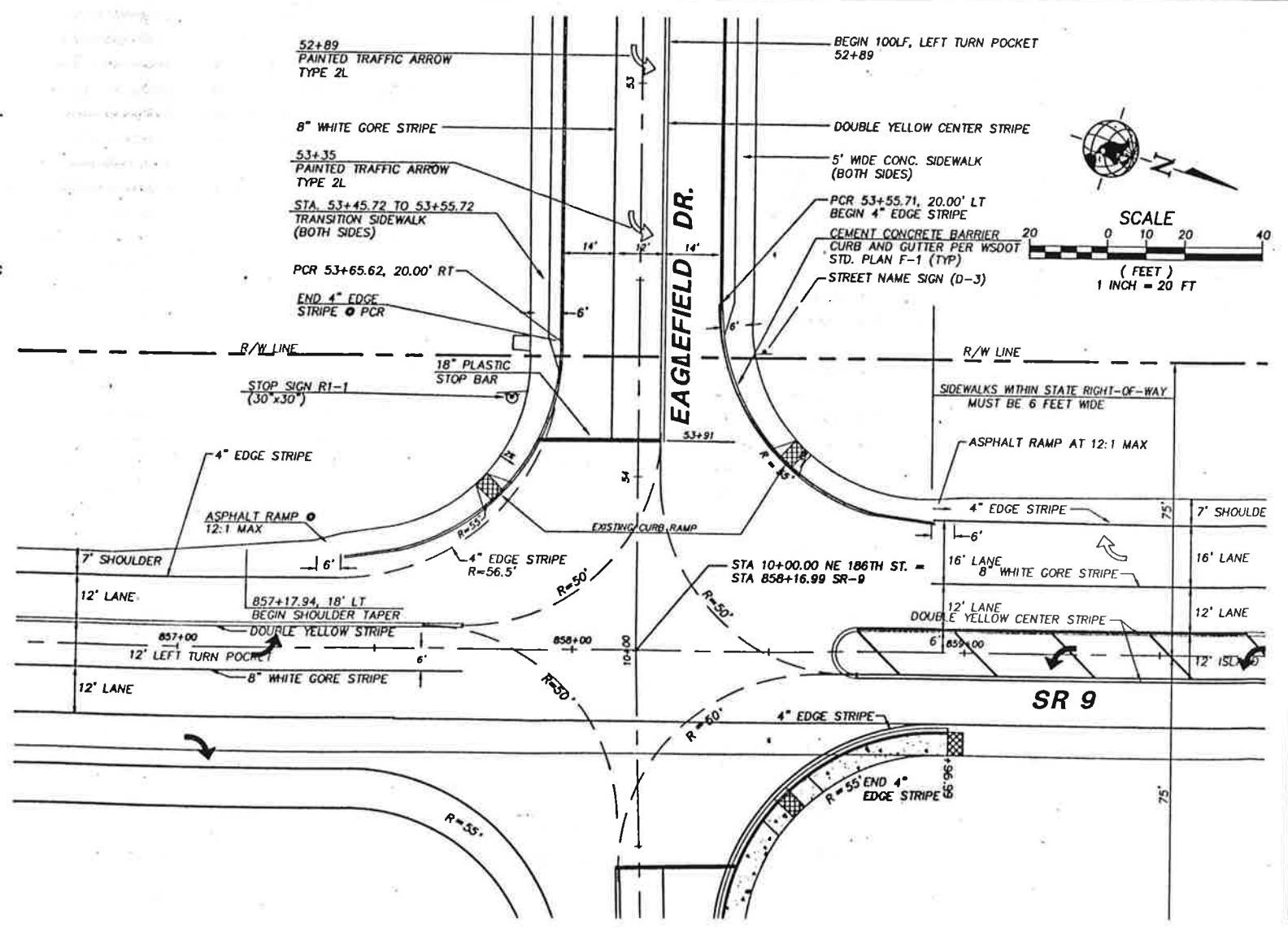


EXHIBIT "B"

AGREEMENT NO. UC 3388
SR 9 MP 26.96 CS 3134
PAGE 1 OF 2

W&P PACIFIC
3025 112TH AVENUE NE
BELLEVUE, WA 98006-6304
WWW.W&PACIFIC.COM
TEL: (425) 457-0999 FAX: (425) 457-8941

WIGAN DEVELOPMENT, INC.
S.R. 9 IMPROVEMENTS
CHANNELIZATION AND STRIPING PLAN
(MP 26.84 - MP 27.06)
WASHINGTON
CITY OF ARLINGTON

DESIGNED BY:	LMR	CHECKED BY:	LMR
DRAWN BY:	MSV	APPROVED BY:	MSV
REVISION:	MSV	DATE:	MSV
STATION CHANGE:	MSV	DATE:	MSV