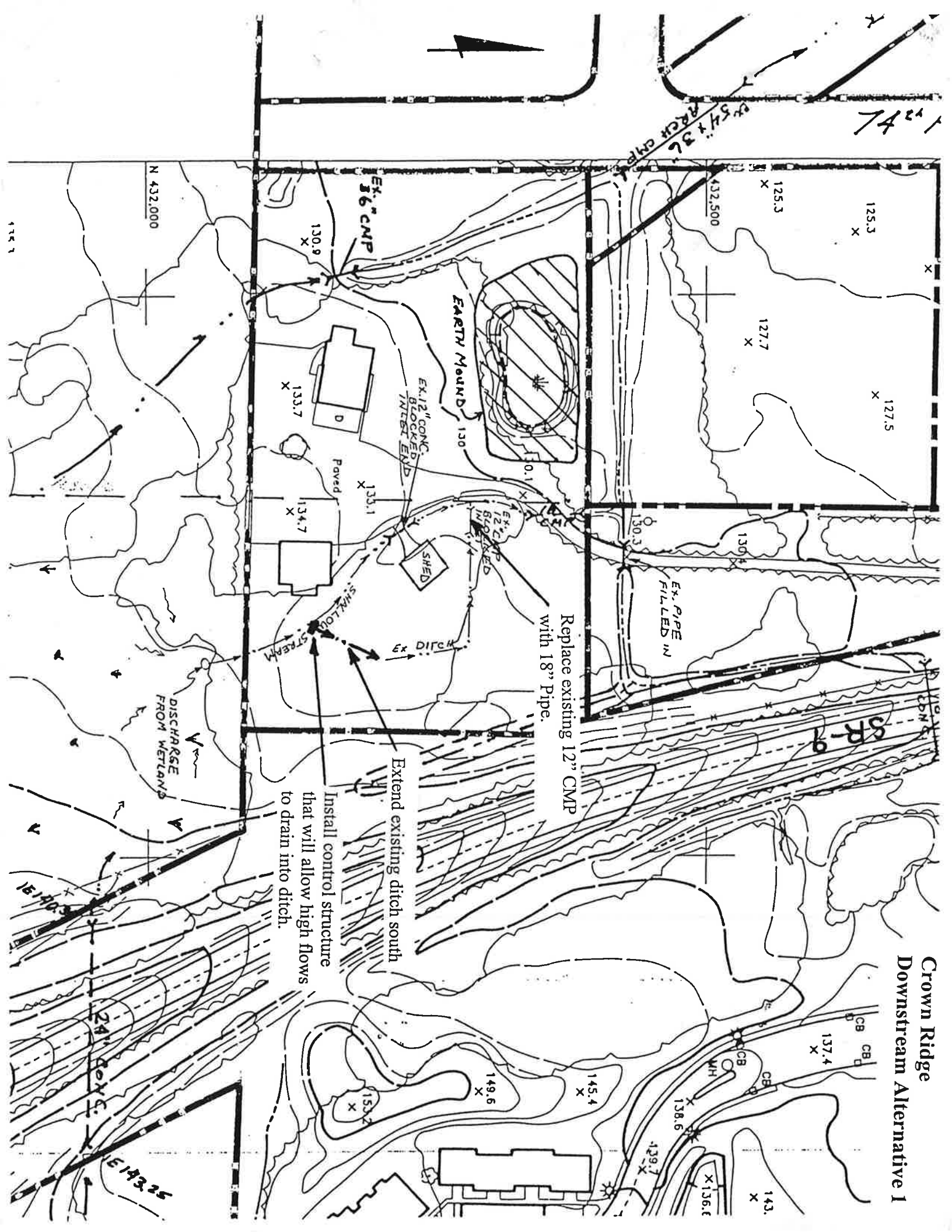
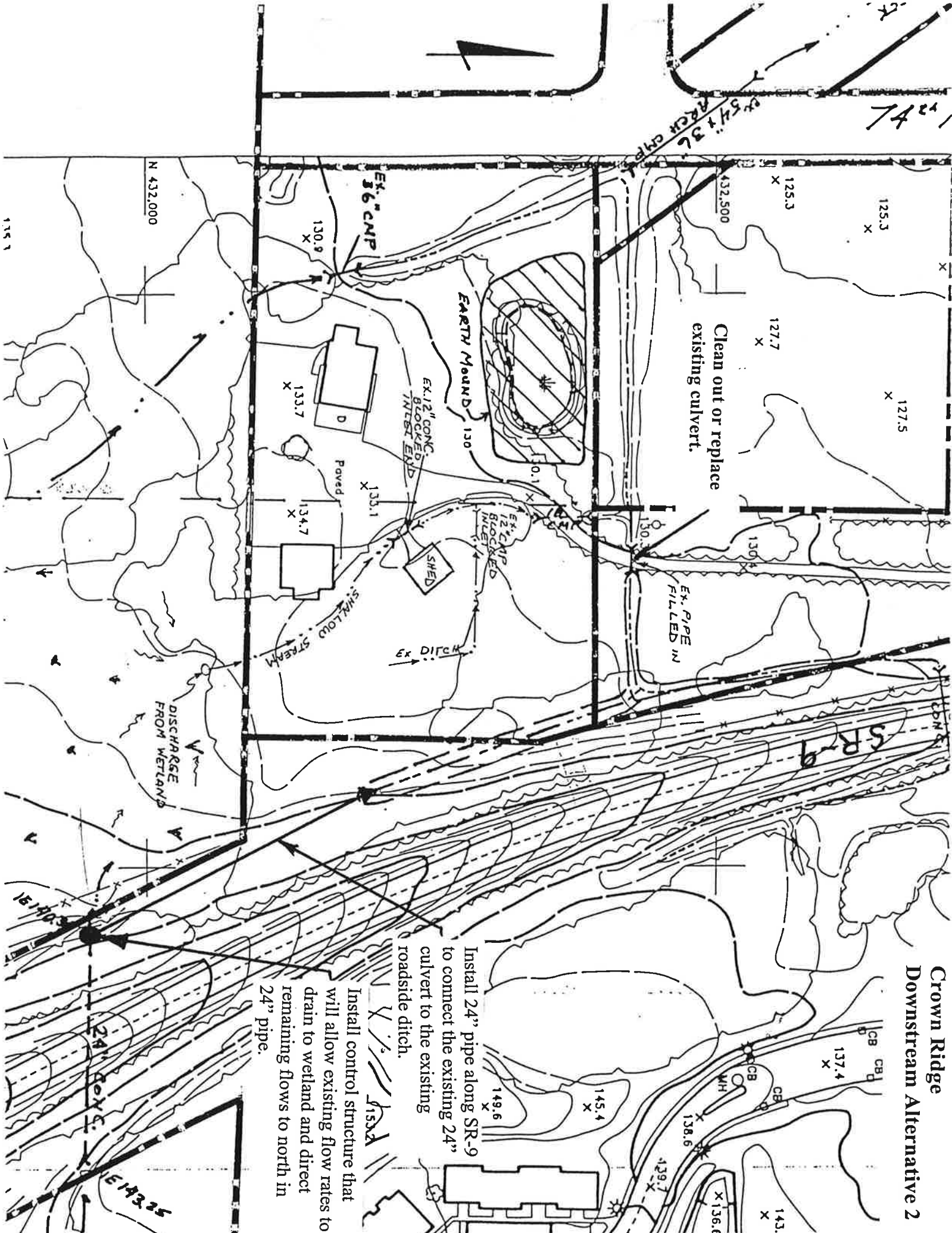


Crown Ridge Downstream Alternative 1



Crown Ridge Downstream Alternative 2



Clean out or replace
existing culvert.

Install 24" pipe along SR-9
to connect the existing 24"
culvert to the existing
roadside ditch.

Install control structure that
will allow existing flow rates to
drain to wetland and direct
remaining flows to north in
24" pipe.

N 432,000

135.1

7421

SR-9
AREA CMP

432,500

125.3

125.3

127.7

127.5

Ex. 36" CMP

130.9

EARTH MOUND 150

10.1

Ex. 12" CONC
BLOCKED
INLET EXD

133.7

Paved

133.1

SHED

Ex. 12" CMP
BLOCKED
INLET

134.7

SHALLOW
STREAM

Ex DITCH

Ex. PIPE
FILLED IN

DISCHARGE
FROM WETLAND

SR-9

137.4

145.4

149.6

138.6

136.6

143.

24" CONC.

SR-9

Crown Ridge Downstream Alternative 3

