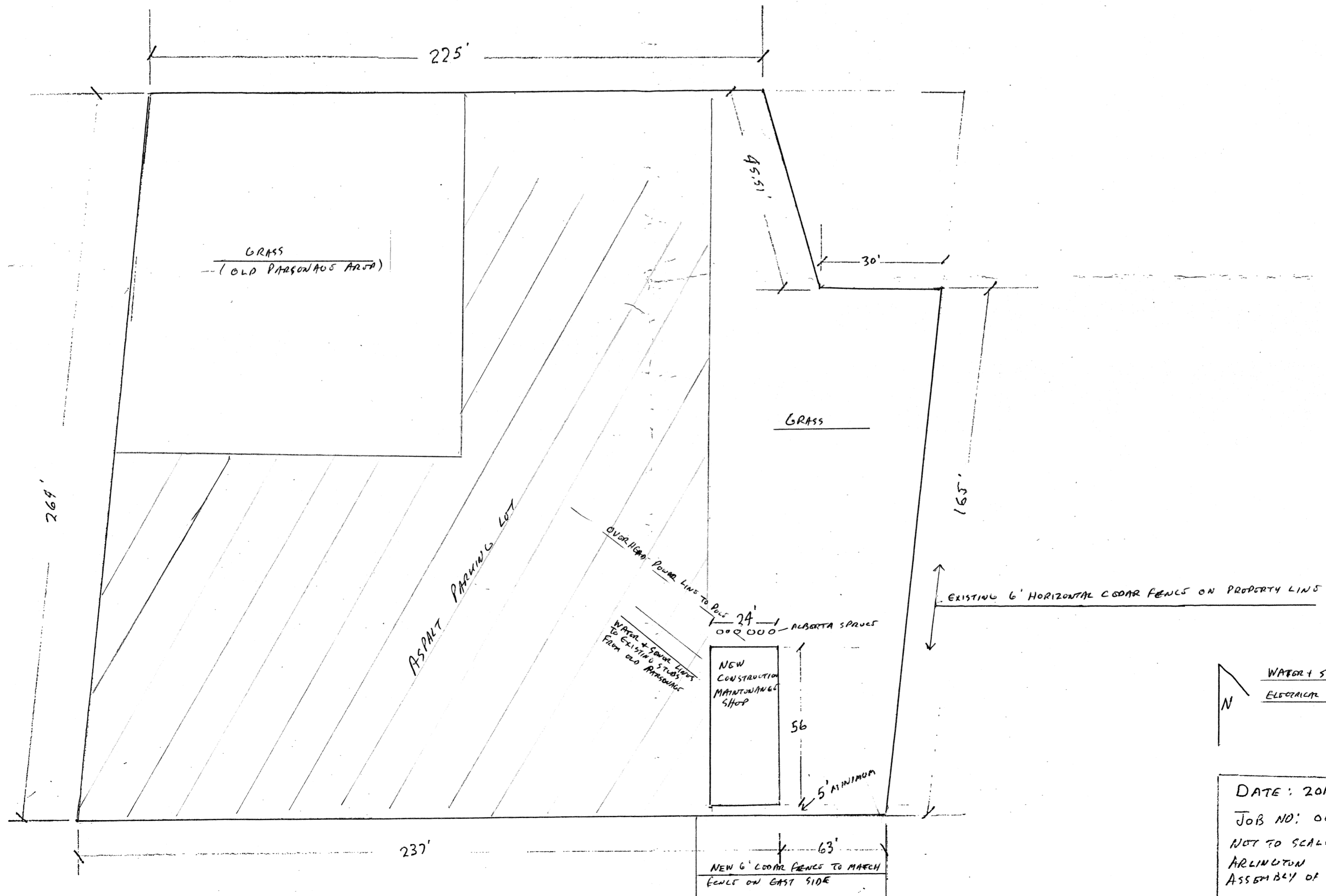


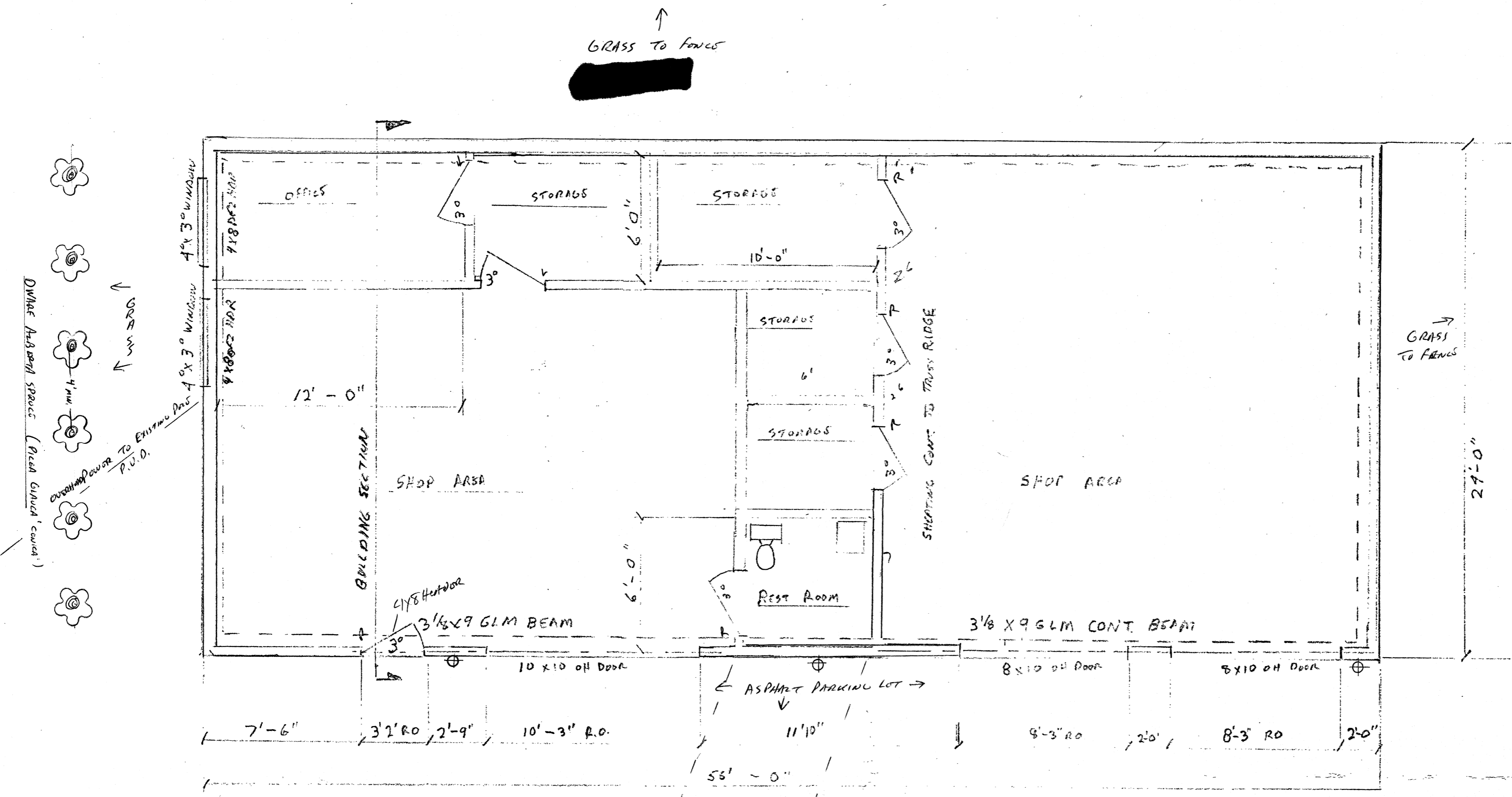
~~CONFIDENTIAL~~



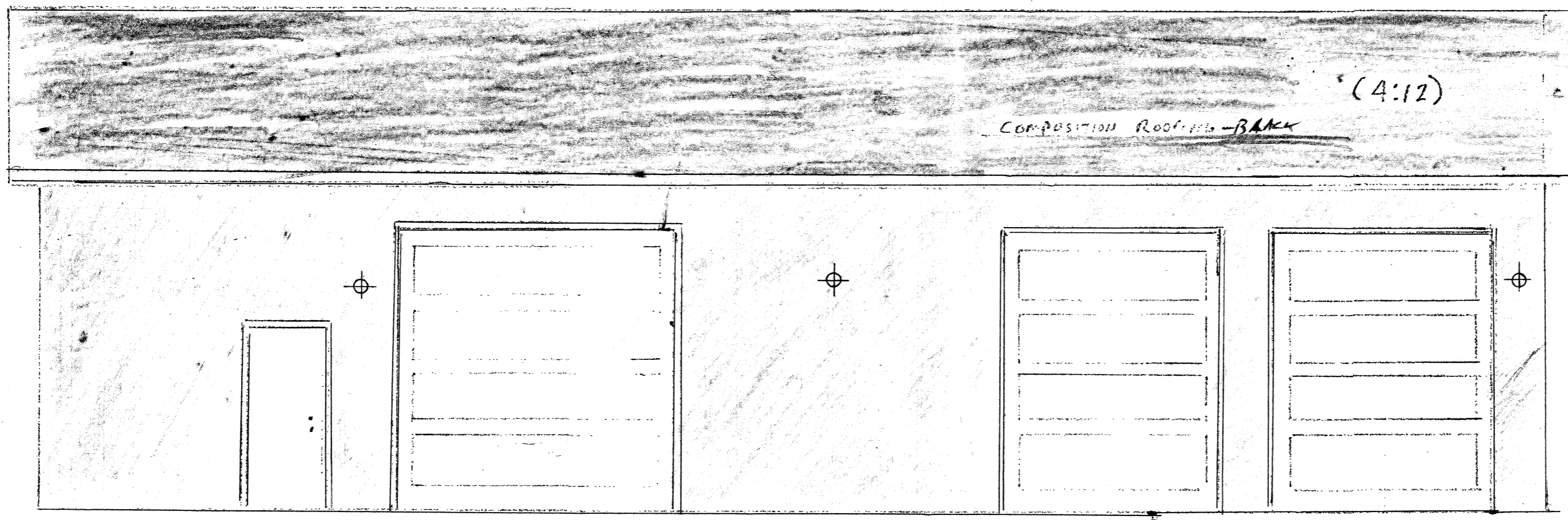
WATER & SEWER - CITY OF ARLINGTON
ELECTRICAL POWER - S.W. CITY RD.

DATE: 2018
JOB NO: 007
NOT TO SCALE
ARLINGTON
ASSEMBLY OF GOD
A-3

115 N. STILLAWATISH AVE
ARLINGTON, WA.



FOUNDATION AND FRAMING PLAN
 1/4" = 1'-0"

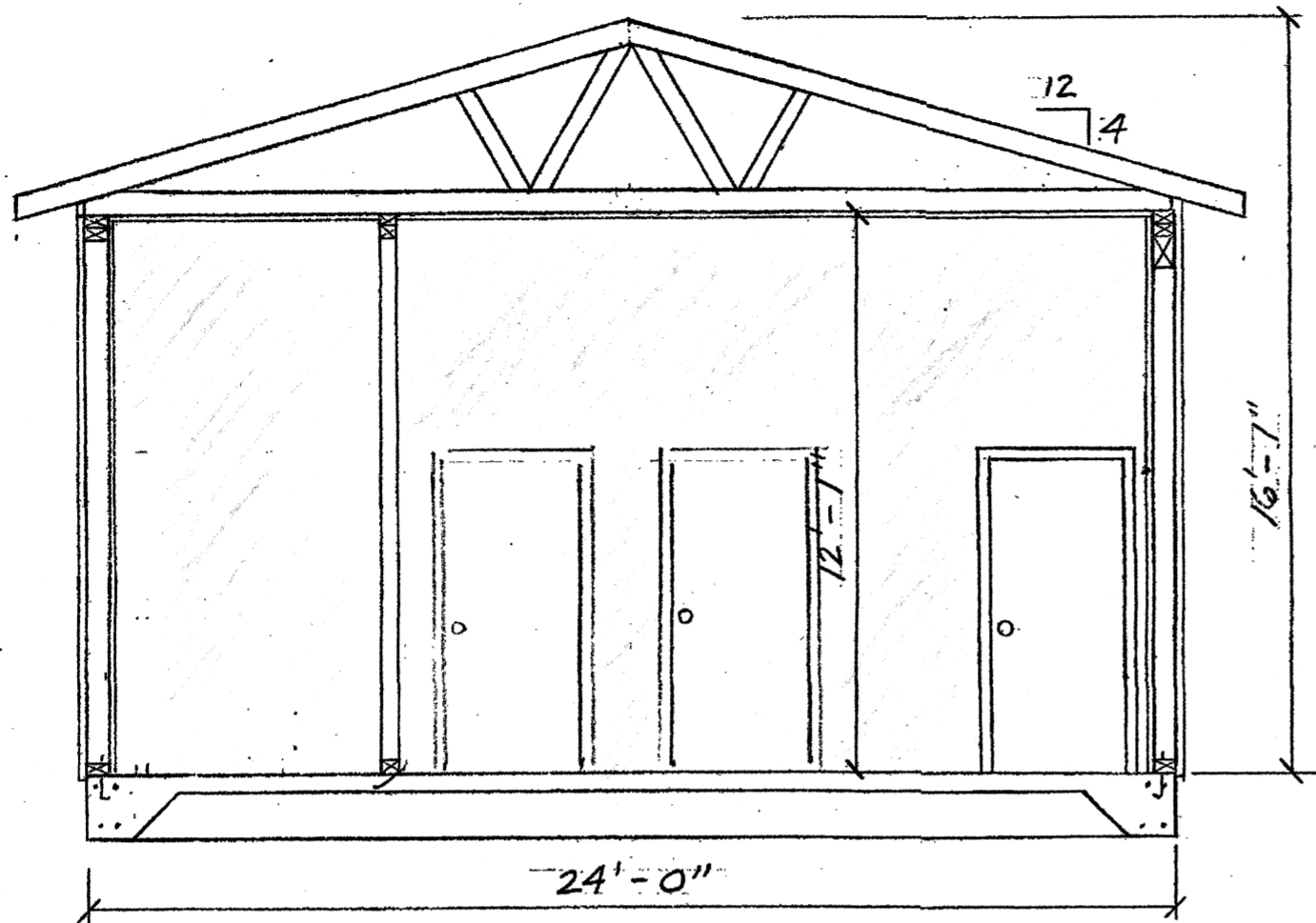


FRONT ELEVATION - WEST SIDE
 1/4" = 1'-0"

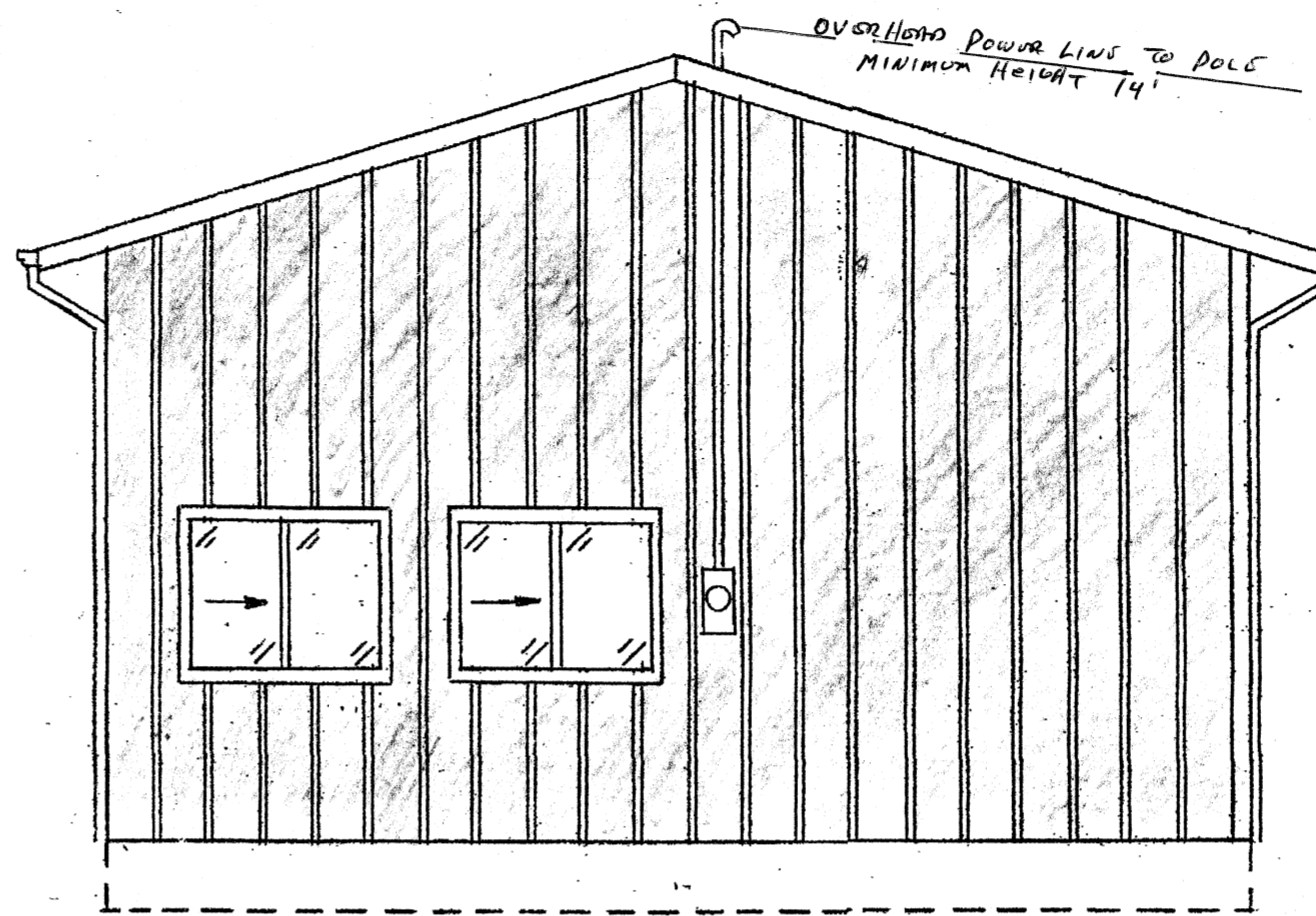


DATE: 2018
JOB NO. 007
SCALE: 1/8" = 1'-0"
ARLINGTON
ASSEMBLY OF GOD
A - ONE

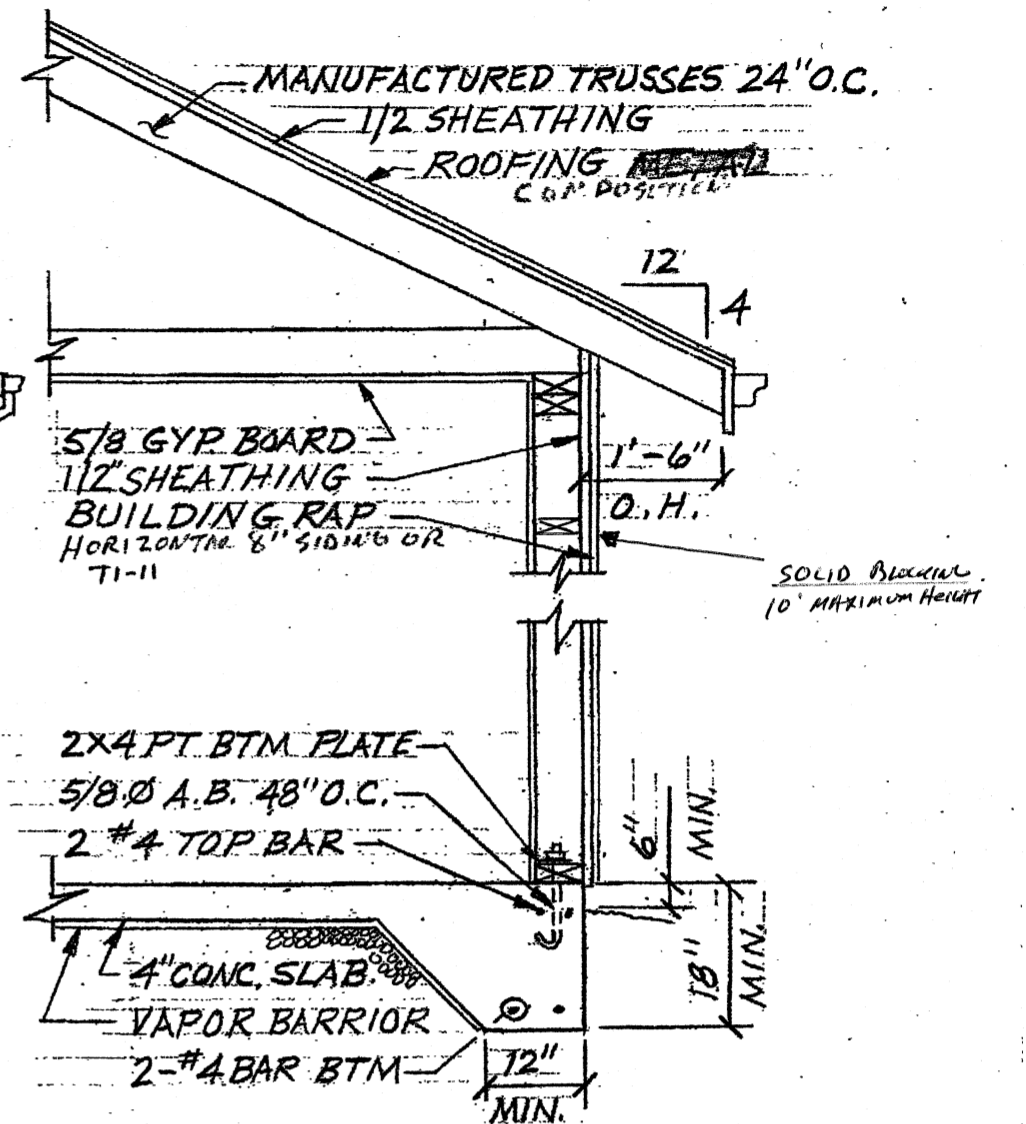
PARCEL #
 31051200201300 Received
 115 N STILLBURNER AVE DEC 14 2018
 FRENCH, W. PLN 496



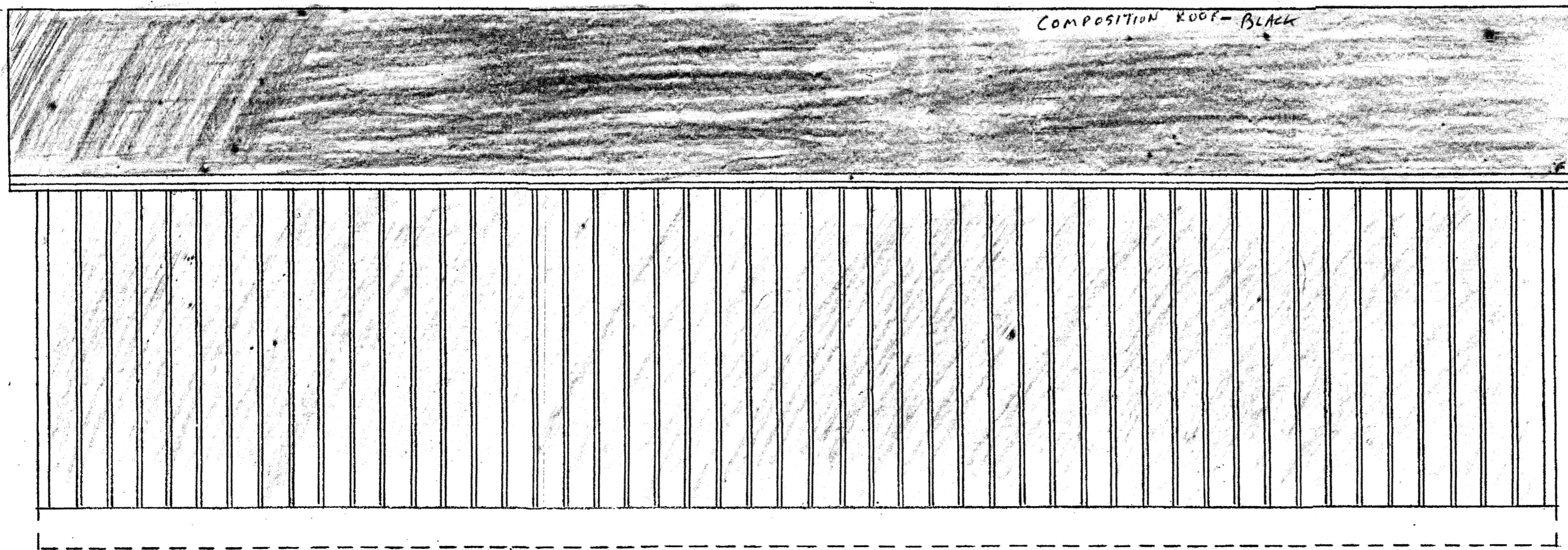
BUILDING SECTION SOUTH END
 1/4" = 1'-0"



LEFT ELEVATION NORTH END
 1/4" = 1'-0"



WALL SECTION
 1/2" = 1'-0"



BACK ELEVATION EAST SIDE
 1/4" = 1'-0"

MAIN BODY COLOR - SMOKESTAIN GREY BOHR N2203
 PANEL BARS TRIM - WHITE BOHR # 730A-1
 DOORS COLOR - WHITE
 ROOF - BLACK

DATE: 2018
JOB NO: 007
SCALE: 1/4" = 1'-0"
ARLINGTON ASSEMBLY OF GOD
215 N STILLMEADOWS
A-2